



9A Glenville Parade, Gloucester, GL3 3ES

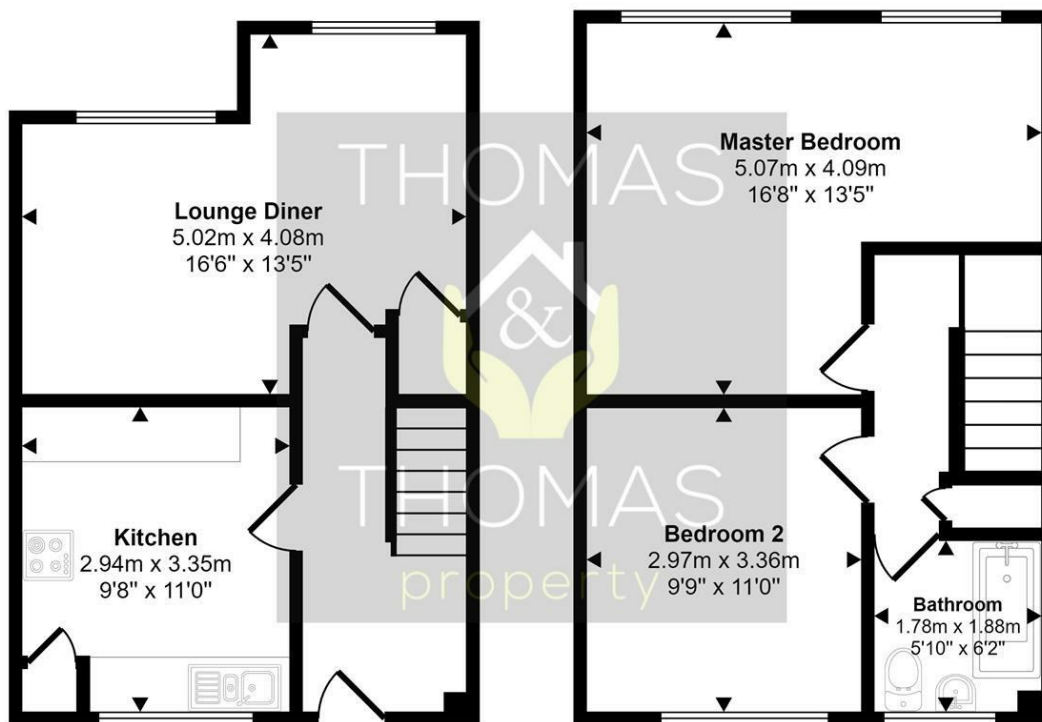
£950 Per Calendar Month

Thomas & Thomas property bring to the rental market this two double bedroom split level maisonette located in Hucclecote.

The modern apartment is being let unfurnished and briefly comprises of: Entrance Hallway, a good size modern kitchen, lounge/diner with balcony, two double bedrooms and modern bathroom. The property also comes with parking.

Available February. Full virtual tour available.

- Hucclecote
- Two Double Bedrooms
- Parking
- Split Level
- Well Presented
- Available February



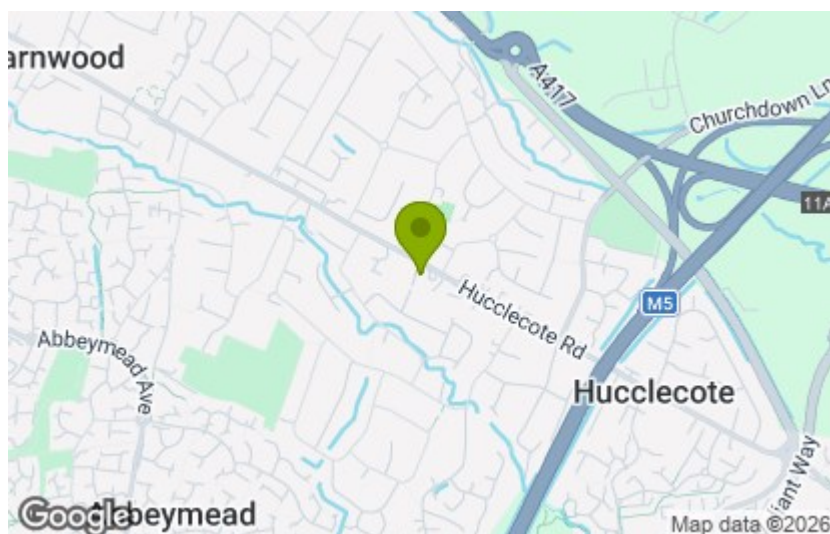
Ground Floor

First Floor

This floorplan is only for illustrative purposes and is not to scale. Measurements of rooms, doors, windows, and any items are approximate and no responsibility is taken for any error, omission or mis-statement. Icons of items such as bathroom suites are representations only and may not look like the real items. Made with Made Snappy 360.

Energy Efficiency Rating		
	Current	Potential
Very energy efficient - lower running costs		
(92 plus) A		
(81-91) B		
(69-80) C		
(55-68) D		
(39-54) E		
(21-38) F		
(1-20) G		
Not energy efficient - higher running costs		
England & Wales	EU Directive 2002/91/EC	

Environmental Impact (CO ₂) Rating		
	Current	Potential
Very environmentally friendly - lower CO ₂ emissions		
(92 plus) A		
(81-91) B		
(69-80) C		
(55-68) D		
(39-54) E		
(21-38) F		
(1-20) G		
Not environmentally friendly - higher CO ₂ emissions		
England & Wales	EU Directive 2002/91/EC	



These particulars, whilst believed to be accurate are set out as a general outline only for guidance and do not constitute any part of an offer or contract. Intending purchasers should not rely on them as statements of representation of fact, but must satisfy themselves by inspection or otherwise as to their accuracy. No person in this firm's employment has the authority to make or give any representation or warranty in respect of the property.