



Flat 3 Elmgrove Road East, Gloucester, GL2 4DP

£925 Per Calendar Month

2 1 1 B

A Stylish, apartment located in Hardwicke offering great access to Gloucester City Centre and junction 12 of the M5.

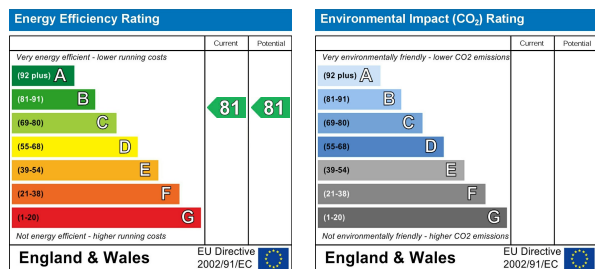
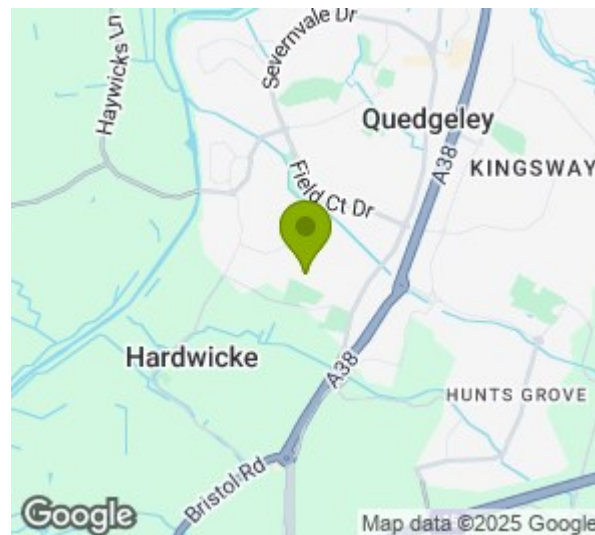
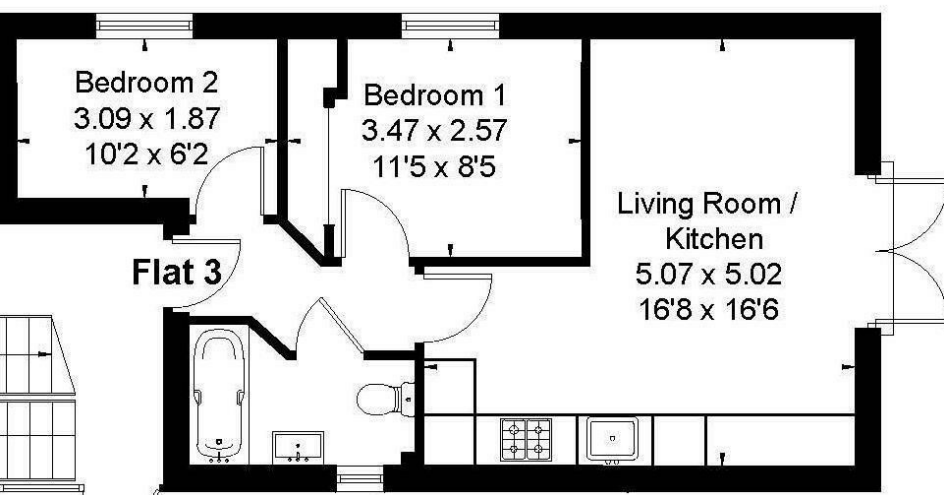
The property is accessed via a set of metal gates into a secure parking area where this apartment benefits from one allocated parking space, with a good range of visitors spaces. The apartment itself is available in good decorative order and comprises of two bedrooms, an open plan kitchen/lounge a bathroom with shower over and a south facing garden with side access.

Available December

- Two Bedrooms
- Garden
- Parking
- Electric Heating
- Available December

Viewing

Please contact our Thomas & Thomas property Ltd Office on 01452 348208 if you wish to arrange a viewing appointment for this property or require further information.



These particulars, whilst believed to be accurate are set out as a general outline only for guidance and do not constitute any part of an offer or contract. Intending purchasers should not rely on them as statements of representation of fact, but must satisfy themselves by inspection or otherwise as to their accuracy. No person in this firms employment has the authority to make or give any representation or warranty in respect of the property.