



14 Hyatt Close, Longford, Gloucester, GL2 9FF

**50% Shared Ownership
£145,350**

Nestled in the cul-de-sac of Hyatt Close, Longford, this well-presented semi-detached house offers an excellent opportunity for those seeking a comfortable family home. With three spacious bedrooms, this property is ideal for families or individuals looking for extra space. The inviting reception room provides a perfect setting for relaxation and entertaining guests.

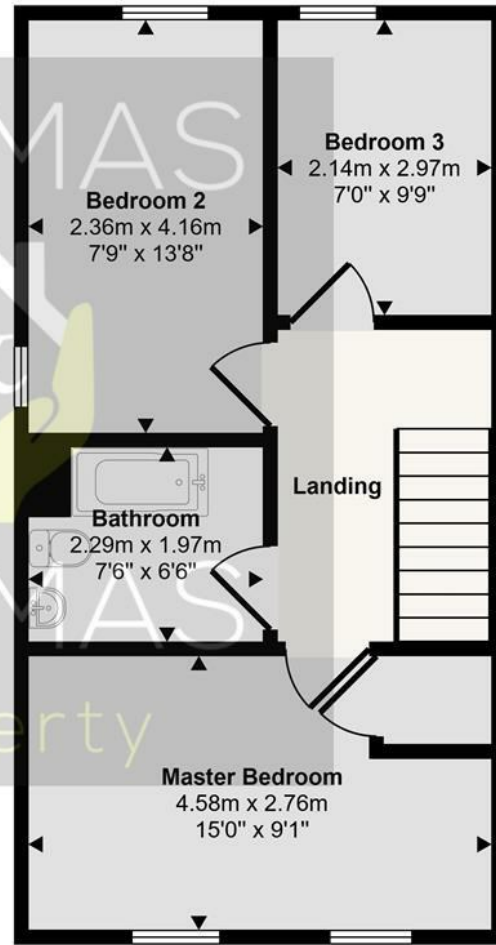
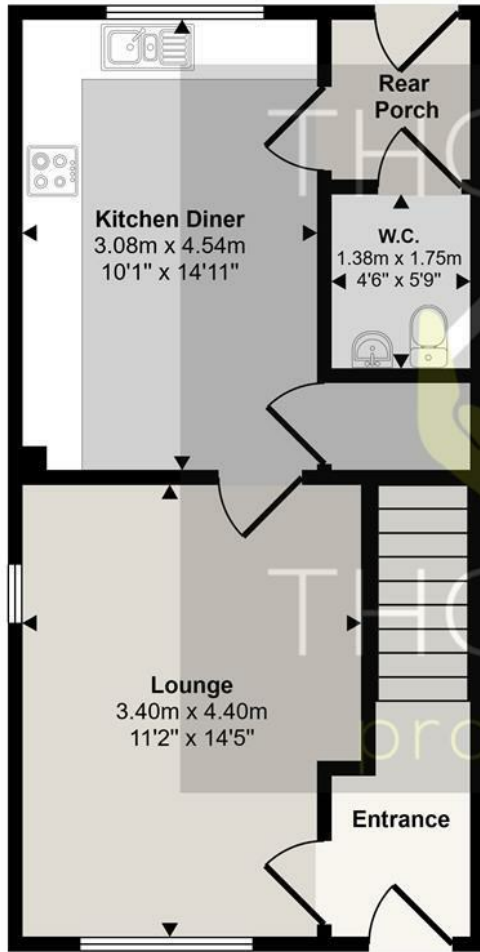
The house features a modern bathroom, ensuring convenience for daily routines. One of the standout aspects of this property is the 51% shared ownership scheme, making it an attractive option for first-time buyers or those looking to enter the property market with a more manageable financial commitment.

Additionally, the property boasts two allocated parking spaces, a valuable asset in today's busy world. Its location is particularly advantageous, being close to local amenities and a primary school, making it an ideal choice for families with children.

In summary, this semi-detached house on Hyatt Close presents a wonderful opportunity to enjoy a well-connected and comfortable lifestyle in Longford. With its appealing features and convenient location, it is certainly worth considering for your next home.

- 51% Shared Ownership
 - Well Presented
 - Three Bedrooms
- Two Allocated Parking Spaces
 - Cul-De-Sac Location
 - Semi Detached

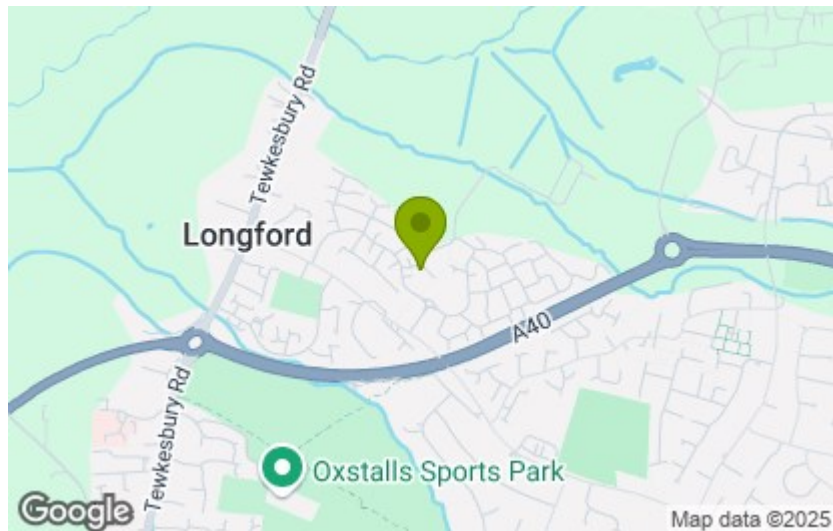
Approx Gross Internal Area
84 sq m / 903 sq ft



This floorplan is only for illustrative purposes and is not to scale. Measurements of rooms, doors, windows, and any items are approximate and no responsibility is taken for any error, omission or mis-statement. Icons of items such as bathroom suites are representations only and may not look like the real items. Made with Made Snappy 360.

Energy Efficiency Rating		
	Current	Potential
Very energy efficient - lower running costs		
(92 plus) A		95
(81-91) B		84
(69-80) C		
(55-68) D		
(39-54) E		
(21-38) F		
(1-20) G		
Not energy efficient - higher running costs		
England & Wales	EU Directive 2002/91/EC	EU Directive 2002/91/EC

Environmental Impact (CO ₂) Rating		
	Current	Potential
Very environmentally friendly - lower CO ₂ emissions		
(92 plus) A		
(81-91) B		
(69-80) C		
(55-68) D		
(39-54) E		
(21-38) F		
(1-20) G		
Not environmentally friendly - higher CO ₂ emissions		
England & Wales	EU Directive 2002/91/EC	EU Directive 2002/91/EC



These particulars, whilst believed to be accurate are set out as a general outline only for guidance and do not constitute any part of an offer or contract. Intending purchasers should not rely on them as statements of representation of fact, but must satisfy themselves by inspection or otherwise as to their accuracy. No person in this firm's employment has the authority to make or give any representation or warranty in respect of the property.

www.thomasproperty.co.uk