



## 16 Sovereign Court Henry Street, Gloucester, GL1 3EL Offers Over £60,000

Thomas and Thomas are pleased to bring to the market this very well presented two bedroom over 55's retirement property located in Sovereign Court and offered to the market CHAIN FREE.

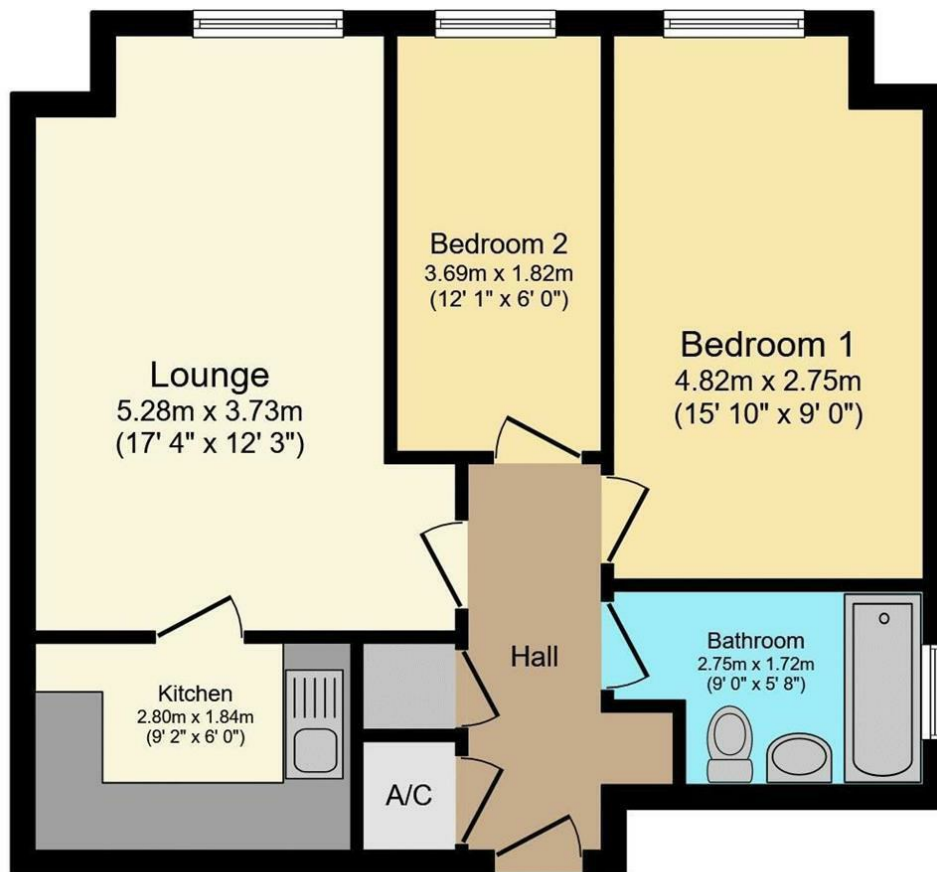
The property is situated on the first floor with lift access. Comprising of: Entrance Hall leading to the good sized lounge. There is a large double and single bedroom. The modern kitchen has an integrated oven and electric hob. There is also space for a fridge / freezer and washing machine. Finally, a bathroom with shower over bath.

Parking is offered on a first come first served basis in the car park to the front of the property but there is also on road permit parking available. Outside there are well kept communal gardens.

The development manager can be contacted from various points within each property in the case of an emergency. For periods when the development manager is off duty there is a 24 hour emergency Appello call system.

- Chain Free
- Over 55's Retirement Development
- Two Bedrooms
- Very Well Presented
- First Floor
- Lift Access





This floor plan is for illustrative purposes only. It is not drawn to scale. Any measurements, floor areas (including any total floor area), openings and orientation are approximate. No details are guaranteed, they cannot be relied upon for any purpose and they do not form part of any agreement. No liability is taken for any error, omission or misstatement. A party must rely upon its own inspection(s).  
Powered by [www.focalagent.com](http://www.focalagent.com)

| Energy Efficiency Rating                    |                         |           |
|---|-------------------------|-----------|
|   | Current                 | Potential |
| Very energy efficient - lower running costs |                         |           |
| (92 plus) <b>A</b>                          |                         |           |
| (81-91) <b>B</b>                            |                         |           |
| (69-80) <b>C</b>                            |                         |           |
| (55-68) <b>D</b>                            |                         |           |
| (39-54) <b>E</b>                            |                         |           |
| (21-38) <b>F</b>                            |                         |           |
| (1-20) <b>G</b>                             |                         |           |
| Not energy efficient - higher running costs |                         |           |
| <b>England &amp; Wales</b>                  | EU Directive 2002/91/EC |           |

| Environmental Impact (CO <sub>2</sub> ) Rating                  |                         |           |
|---|-------------------------|-----------|
|   | Current                 | Potential |
| Very environmentally friendly - lower CO <sub>2</sub> emissions |                         |           |
| (92 plus) <b>A</b>  |                         |           |
| (81-91) <b>B</b>  |                         |           |
| (69-80) <b>C</b>  |                         |           |
| (55-68) <b>D</b>  |                         |           |
| (39-54) <b>E</b>  |                         |           |
| (21-38) <b>F</b>  |                         |           |
| (1-20) <b>G</b>   |                         |           |
| Not environmentally friendly - higher CO <sub>2</sub> emissions |                         |           |
| <b>England &amp; Wales</b>                                      | EU Directive 2002/91/EC |           |



These particulars, whilst believed to be accurate are set out as a general outline only for guidance and do not constitute any part of an offer or contract. Intending purchasers should not rely on them as statements of representation of fact, but must satisfy themselves by inspection or otherwise as to their accuracy. No person in this firms employment has the authority to make or give any representation or warranty in respect of the property.