



25 Simon Road, Gloucester, GL2 0TP
Asking Price £270,000

 3  1  1  D

- Three Bedroom
- Semi Detached
- Longlevens Location
- Off Road Parking
- Garden
- Private Enclosed Garden

Thomas and Thomas are pleased to present this three bedroom semi detached home located at the end of a quiet cul de sac in Longlevens.

Briefly comprising of: porch area leading into the cosy lounge area, open plan dining room and kitchen with patio doors leading out to the private enclosed garden. Upstairs there are two double bedrooms, a single bedroom and a modern fitted bathroom with enclosed shower.

Outside there is driveway parking for at least two cars and a garage.

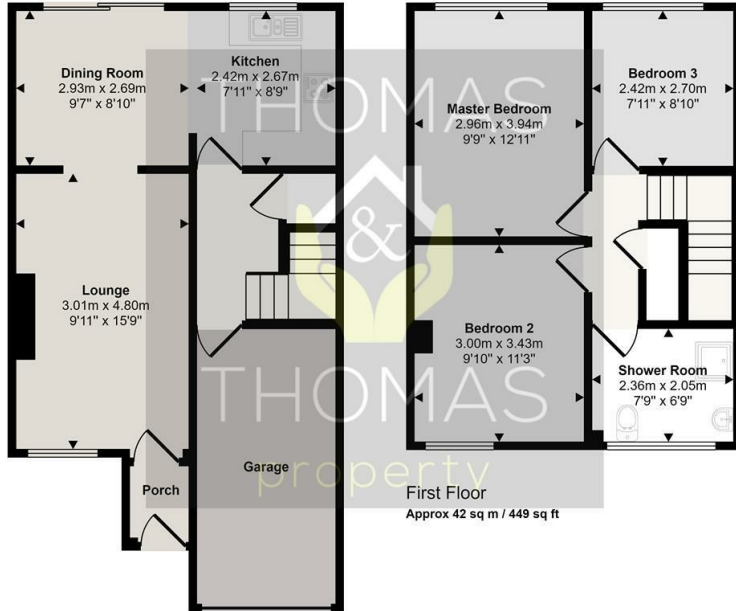
This would made the ideal family home, please call today to arrange your viewing.

Viewing

Please contact our Thomas & Thomas property Ltd Office on 01452 348208 if you wish to arrange a viewing appointment for this property or require further information.



Approx Gross Internal Area
92 sq m / 993 sq ft



Ground Floor
Approx 51 sq m / 544 sq ft

This floorplan is only for illustrative purposes and is not to scale. Measurements of rooms, doors, windows, and any items are approximate and no responsibility is taken for any error, omission or mis-statement. Icons of items such as bathroom suites are representations only and may not look like the real items. Made with Made Snappy 360.



Energy Efficiency Rating	
Current	Potential
62	75

Environmental Impact (CO ₂) Rating	
Current	Potential
F	D



These particulars, whilst believed to be accurate are set out as a general outline only for guidance and do not constitute any part of an offer or contract. Intending purchasers should not rely on them as statements of representation of fact, but must satisfy themselves by inspection or otherwise as to their accuracy. No person in this firm's employment has the authority to make or give any representation or warranty in respect of the property.