



14 Leeming Walk Kingsway, Gloucester, GL2 2BT Offers Over £250,000



- Three Bedroom
- Semi Detached
- En Suite & Family Bathroom
- Allocated Parking
- Separate Dining & Living Room
- Garden

Thomas and Thomas are pleased to present this immaculate three bedroom semi detached home. Modern throughout and offering allocated parking, this would make the ideal family home.

Briefly comprising of: Entrance hall with WC, a good sized living room with feature fireplace and double doors opening onto the garden, separate dining room with bay window and finally kitchen with room for all appliances, ample cupboard space and extra storage under the stairs.

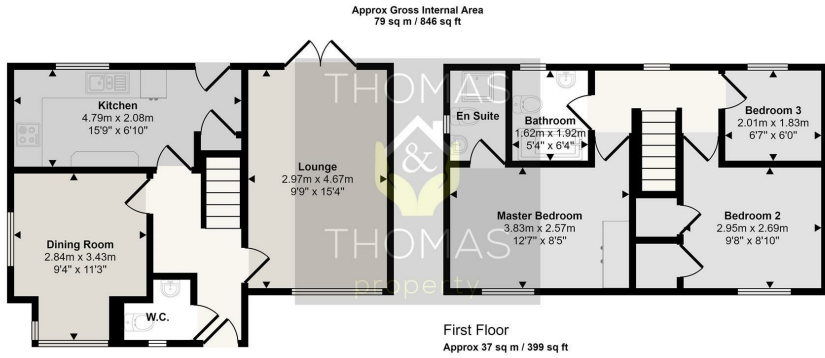
Upstairs you will find the main bedroom with en suite shower room, family bathroom with shower over bath, double bedroom with built in wardrobe space and finally a single bedroom.

Outside is the landscaped garden with decking and grass areas, with side access.

Viewing

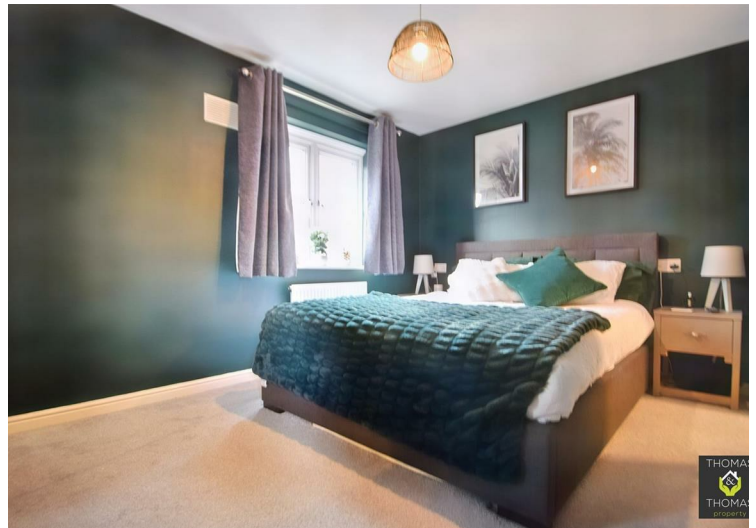
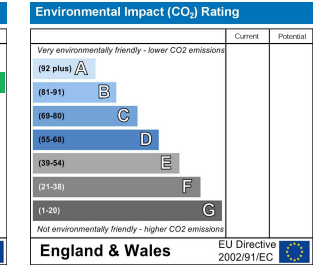
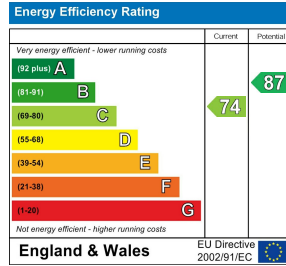
Please contact our Thomas & Thomas property Ltd Office on 01452 348208 if you wish to arrange a viewing appointment for this property or require further information.





Ground Floor
Approx 42 sq m / 447 sq ft

This floorplan is only for illustrative purposes and is not to scale. Measurements of rooms, doors, windows, and any items are approximate and no responsibility is taken for any error, omission or mis-statement. Icons of items such as bathroom suites are representations only and may not look like the real items. Made with Made Snappy 360.



These particulars, whilst believed to be accurate are set out as a general outline only for guidance and do not constitute any part of an offer or contract. Intending purchasers should not rely on them as statements of representation of fact, but must satisfy themselves by inspection or otherwise as to their accuracy. No person in this firm's employment has the authority to make or give any representation or warranty in respect of the property.