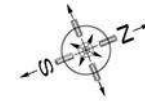
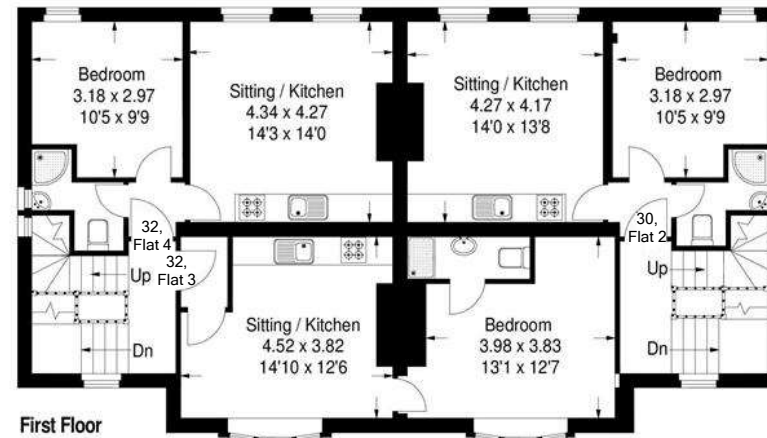
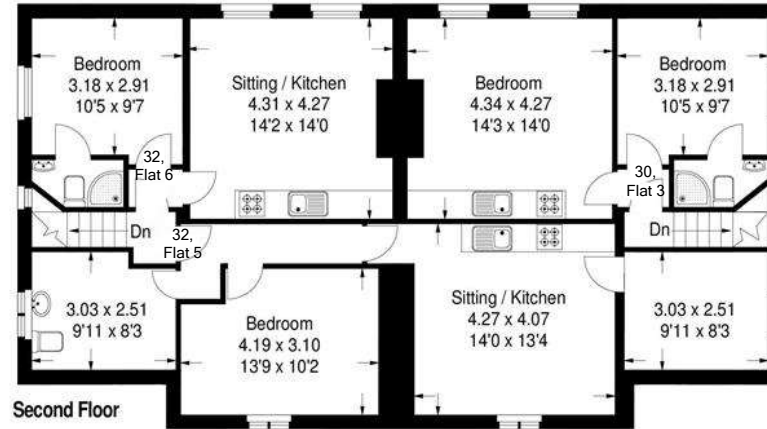
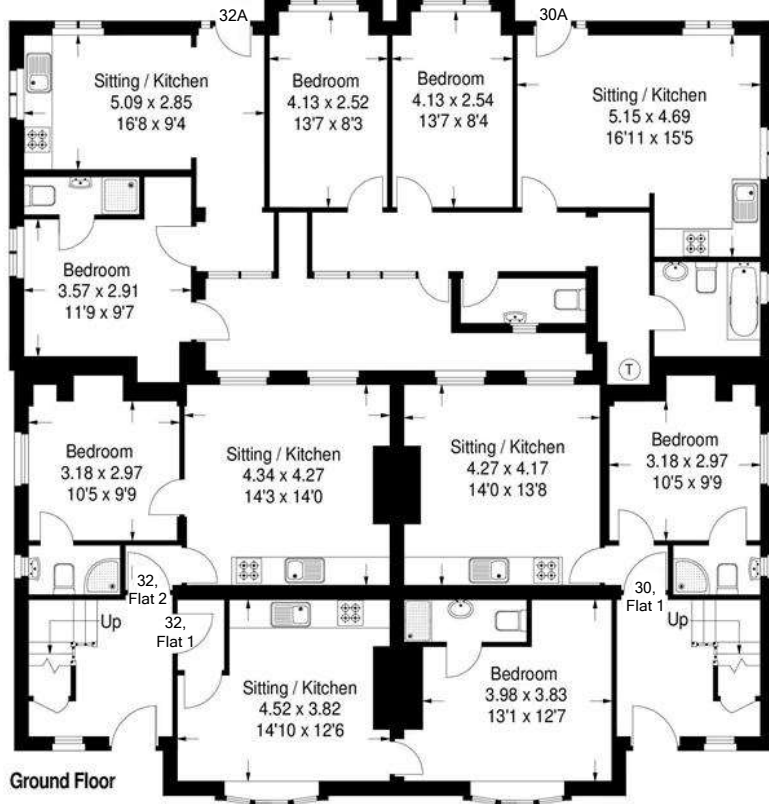


30-32 Park End Road, Gloucester, Gloucestershire



Approximate Gross Internal Area :-

- 32, Flat 1) 35 sq m / 376 sq ft
- 32, Flat 2) 32 sq m / 344 sq ft
- 32, Flat 3) 35 sq m / 376 sq ft
- 32, Flat 4) 33 sq m / 355 sq ft
- 32, Flat 5) 52 sq m / 559 sq ft
- 32, Flat 6) 31 sq m / 333 sq ft

- 30, Flat 1) 32 sq m / 344 sq ft
- 30, Flat 2) 33 sq m / 355 sq ft
- 30, Flat 3) 31 sq m / 333 sq ft

- 30A 62 sq m / 667 sq ft
- 32A 32 sq m / 344 sq ft

FLOORPLANZ © 2012
01483 755510 Ref 103723

This illustration is for identification purposes only. Measured & drawn in accordance with RICS guidelines. Not drawn to scale, unless stated. Dimensions shown are to the nearest 7.5 cm / 3" & are through cupboard / wardrobes to wall surfaces where possible or where indicated by arrow heads. Whilst every care is taken in the preparation of this plan, please check all dimensions, shapes & compass bearings before making any decisions reliant upon them.